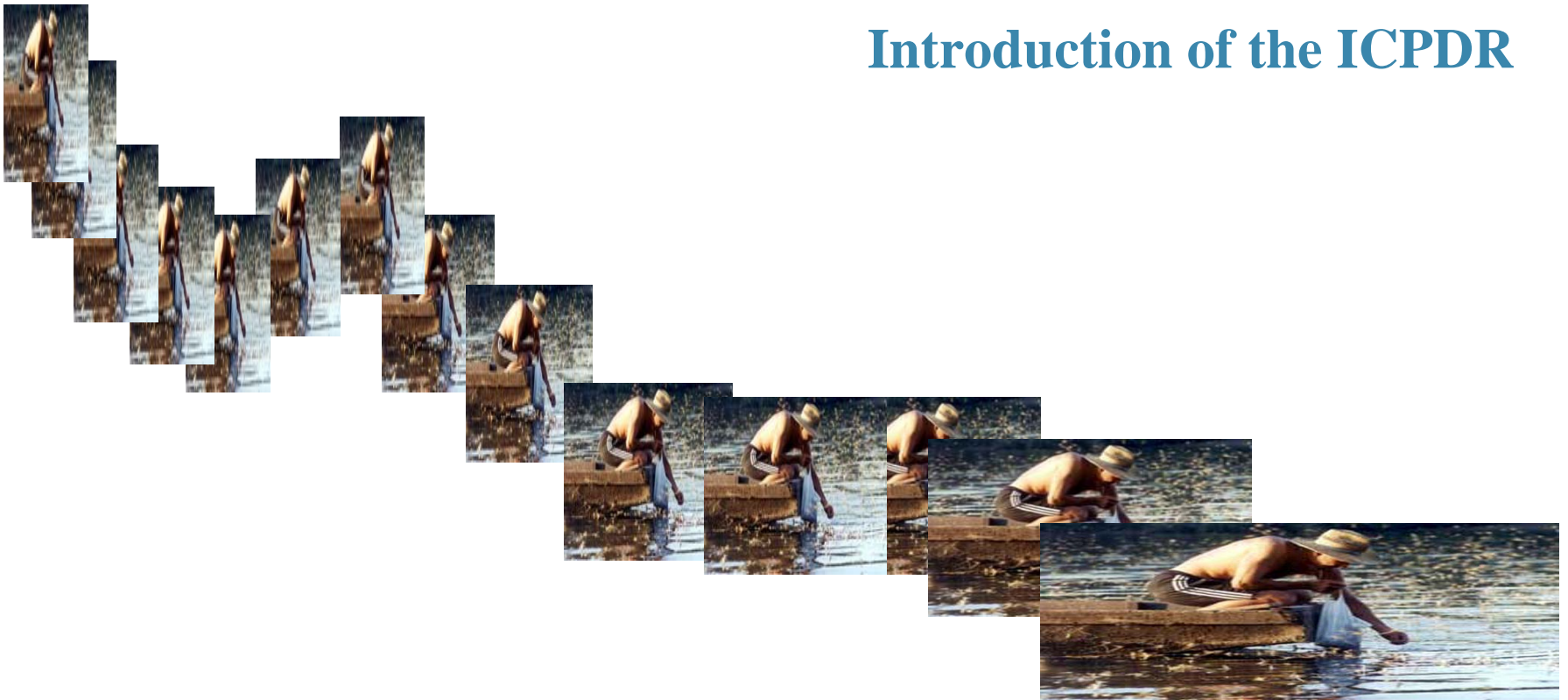


Joint Partner Search Seminar - Slovenia

icpdr **iksd**
International
Commission
for the Protection
of the Danube River
Internationale
Kommission
zum Schutz
der Donau

Introduction of the ICPDR



Slovenia, 2007. September 4-5

Content

- **The Danube River Basin - Common assets & common tasks**
- **Legal background - DRPC & EU WFD**
- **The ICPDR - Objectives and Achievements**
- **Link to the transnational territorial programmes**

Priority areas of the ICPDR





icpdr iksd

International
Commission
for the Protection
of the Danube River

Internationale
Kommission
zum Schutz
der Donau

Most international River Basin in the World

- 800.000km²
- ~9% Europe
- 2.850 km
- 81 M inhabitants
- 19 Countries

Danube River Protection Convention

icpdr **iksd**

International
Commission
for the Protection
of the Danube River

Internationale
Kommission
zum Schutz
der Donau



Legal frame for co-operation **to assure protection of water and ecological resources** and their **sustainable use** in the Danube River Basin.

signed: 29 June 1994, Sofia

entered into force: 22 October 1998

EU Water Framework Directive

icpdr iksd

International
Commission
for the Protection
of the Danube River

Internationale
Kommission
zum Schutz
der Donau



- Comprehensive water directive of the **European Union** to ensure the “**good status of all waters**” **by 2015**.
- Based on the principle of **integrated river basin management** and **stakeholder participation**.
- Priority objective for ICPDR

ICPDR nominated as platform for coordination

ICPDR -

International Commission for the Protection of the Danube River

icpdr iksd

International
Commission
for the Protection
of the Danube River

Internationale
Kommission
zum Schutz
der Donau

to implement the goals of the **Convention**:

- Strengthen international cooperation
- Ensure sustainable water management (conservation, rational use of surface waters and ground water)
- Control floods
- Reduce pollution loads to the Black Sea

Contracting Parties



Germany



Austria



Czech Republic



Slovakia



Hungary



Slovenia



Croatia



Bosnia & Herzegovina



Rep. of Serbia



Romania



Bulgaria



Rep. of Moldova



Ukraine



European Union

Observers to the ICPDR

icpdr ikspd

International
Commission
for the Protection
of the Danube River

Internationale
Kommission
zum Schutz
der Donau



Black Sea Commission

viadonau



**Die Donau –
Tourism Commission**



Navigation
Commission



Friends of Nature



Europ. Angling Ass.



GWP CEE



UNESCO - IHP



REC



VGB Power Tech



Slovenia, 2007. September 4-5

Structure of the Cooperation:

ICPDR – Delegations of the Contracting Parties

ICPDR
Secretariat

River Basin
Management
Expert Group

Pressures and
Measures
Expert Group

Monitoring and
Assessment
Expert Group

Flood Protection
Expert Group

Supported by:

Ad hoc Info and
GIS Expert Group

Ad hoc Public
Participation
Expert Group

Ad hoc Strategic
Expert Group

icpdr iksd

International
Commission
for the Protection
of the Danube River

Internationale
Kommission
zum Schutz
der Donau

Objectives/Achievements

Main Objective



Based on the objectives of the DRPC and EU WFD

**Based on the previous work and studies of the
ICPDR expert groups**

Danube Basin Analysis – 2004

Flood Action Programme - 2006

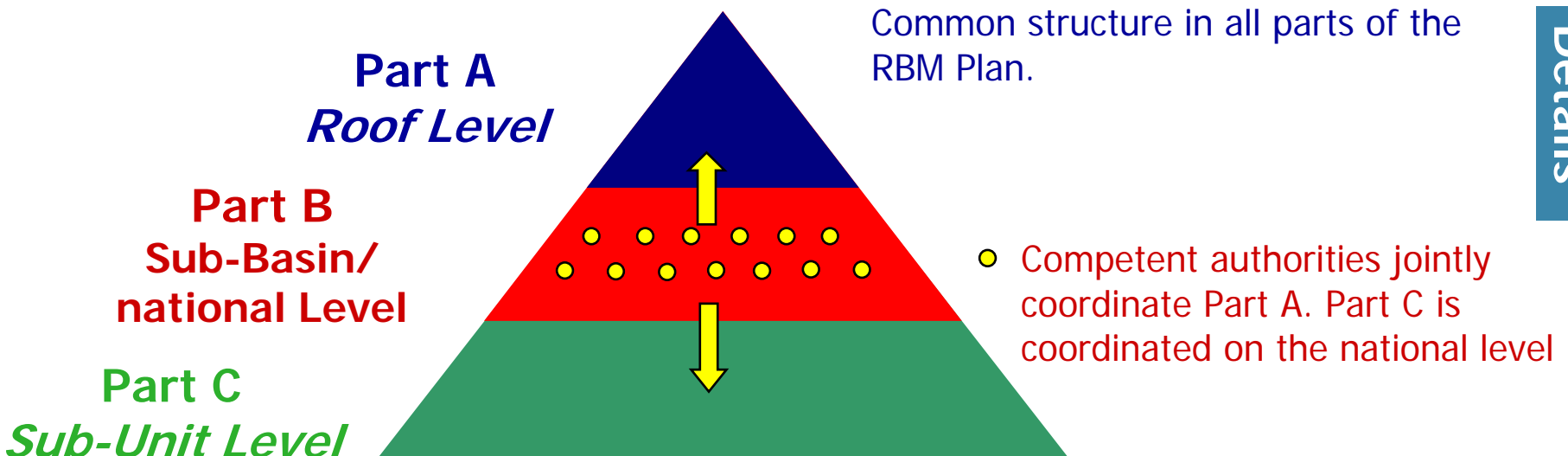
Monitoring Report (WFD compliance) - 2007

**‘Development and implementation of the Integrated
Danube River Basin Management Plan to reach the
‘good status’ of all waters’**

WFD Danube River Basin Management Plan

.....has to be compiled by 2009/10

good coordination mechanisms and a clear strategy including timelines are needed



Danube Basin Analysis 2004

The Danube River Basin District

River basin characteristics, impact of human activities and economic analysis required under Article 5, Annex II and Annex III, and inventory of protected areas required under Article 6, Annex IV of the EU Water Framework Directive (2000/60/EC)

Part A – Basin-wide overview

Short: "Danube Basin Analysis (WFD Root Report 2004)"



The complete report consists of Part A: Basin-wide overview, and Part B: Detailed analysis of the Danube river basin countries
18 March 2005, Reporting deadline: 22 March 2005

- ⇒ First comprehensive analysis of the entire Danube River Basin
- ⇒ Estimation which water bodies are *at risk* to achieve WFD objectives
- ⇒ Basis for any future river basin management planning – DRBM Plan
- ⇒ Identification of significant water management issues

Significant Water Management Issues

icpdr iksd

International
Commission
for the Protection
of the Danube River

Internationale
Kommission
zum Schutz
der Donau



**Nutrient /
Organic
Pollution**



**Hazardous
Substances
Pollution**



**Hydro-
morphological
Alterations**



**Floods /
Droughts**

Next steps



Development and **Implementation**

Integrated DRBM Plan 2009

Joint Programme of Measures

... to reach good water status (WFD)

for the Danube and its people

The logo for the International Commission for the Protection of the Danube River (icpdr) and the Internationale Kommission zum Schutz der Donau (iksd). It features the acronyms 'icpdr' and 'iksd' in a bold, sans-serif font. Below 'icpdr' is the text 'International Commission for the Protection of the Danube River' and below 'iksd' is 'Internationale Kommission zum Schutz der Donau'. A blue curved line arches over the text from the left side.

icpdr iksd

International
Commission
for the Protection
of the Danube River

Internationale
Kommission
zum Schutz
der Donau

Link to the transnational territorial cooperation programme main project areas

Programme Areas:
South Eastern Europe
Central Europe

Projects Planning



**Hydro-
morphological
Alterations**



**Floods /
Droughts**



**Nutrient /
Organic
Pollution**



**Hazardous
Substances
Pollution**

1. Conservation/protection of Sturgeon and other Migratory Species
 - to achieve the good ecological status
2. Flood Risk Mapping
3. Tisza (sub-) Basin – development of Integrated River Basin Management Plan

icpdr iksd

International
Commission
for the Protection
of the Danube River

Internationale
Kommission
zum Schutz
der Donau

Project areas (1)

Sturgeon and other migratory species



Visions and Management Objectives



Longitudinal River Continuity & Habitat Continuity

Anthropogenic barriers and habitat deficits do not hinder fish migration and spawning anymore - **sturgeon species and specified other migratory species** are able to access the Danube River and relevant tributaries. Sturgeon species and specified other migratory species are represented with self-sustaining populations in the DRB according to their natural historical distribution (reference condition).

Phase 1 Feasibility study Iron Gate I & II and habitat restoration lower Danube section/relevant tributaries. Duration: 3 years.
Other migratory species: Investigation presence/absence connectivity of and continuity in relevant tributaries. Based on national knowledge.

Phase 2 **Sturgeon Species:** Implement feasibility study: plan, design and implement fish passage of Iron Gate I & II
Other migratory species: Plan, design and implement fish passage where sturgeons did not occur

Phase 3 **Sturgeon Species & other migratory species:**
As soon as feasibility study is implemented: habitat restoration in middle Danube section/relevant tributaries up to Gabčíkovo Dam.
Feasibility study Gabčíkovo Dam.

Phase 4 **Sturgeon Species & other migratory species:**
Implement feasibility study: plan, design and implement fish passage of Gabčíkovo Dam

Phase 5 As soon as feasibility study is implemented: habitat restoration in upper Danube section. Precondition: sturgeon species need to occur. Feasibility study on sturgeon fish passage

Current status of project planning



- Project is based on outcomes of Danube Basin Analysis 2004
- Longitudinal Continuity of Rivers and passability of Iron Gate for sturgeon species is part of the Joint Programme of Measures of the DRBM Plan
 - JPM will be implemented after 2009 to 2015
- ICPDR Sturgeon Task Group has already established
- First step – Preparation of the feasibility study Iron Gate I & II:
 - Is the Iron Gate passable for sturgeon and other specified important species?
 - Are the habitats downstream and upstream the Iron Gate sufficient to enable self-sustaining populations?

Current status of project planning



- Potential countries to be involved:
 - Bulgaria, Romania, Serbia, Croatia, Hungary
- ToR towards project proposal
- Project 4 project modules (biological assessment/habitat survey, technical options/feasibility, socio economics, coordination/communication)
- Consortuim – establishment currently underway
- Intention: Proposal submittal under next call
- Contact Person – ICPDR: Ms Birgit Vogel (birgit.vogel@unvienna.org)

Project areas (2)

Flood Risk Mapping

Current status of project planning

Flood Risk mapping

- Proposal is under development
- Coordinated by ICPDR Flood EG
- Consortium is established
- Contact Person – ICPDR: Mr Igor Liska
(igor.liska@unvienna.org)

Project areas (3)

Tisza River Basin – Integrated River
Basin Management Planning

Current status of project planning

Basis of the work of the ICPDR Tisza Group:

MoU - Towards a River Basin Management Plan for the Tisza river supporting sustainable development of the region (2004)

First step – Preparation of the Tisza River Basin Analysis Report (will be finalised by the end of 2007)

Second step – Preparation (2009) and implementation (2015) of and Integrated Tisza River Basin Management Plan

Current status of project planning

Potential countries to be involved:

Ukraine, Romania, Slovakia, Hungary, Serbia

No specified project proposal was developed so far

Contact person - ICPDR: Ms Diana Heilmann

(diana.heilmann@unvienna.org)

Thank you for your attention!

icpdr ikisd

International
Commission
for the Protection
of the Danube River

Internationale
Kommission
zum Schutz
der Donau



www.icpdr.org