

Framework Agreement on the Sava River Basin in context of transboundary cooperation in river basin management

Dejan Komatina, Ph.D. Civ. Eng., Secretary, ISRBC
Samo Grošelj, Deputy Secretary

Outline of the approach

Key objective of cooperation

Sustainable development
of the region

IMPLEMENTATION OF PROJECTS

"Engine" of cooperation

ISRBC
(Strategy on FASRB
implementation)

(Legal) framework for cooperation

- FASRB
- Protocols to FASRB
- Declaration of the 2nd MoP
- MoUs with ICPDR and DC
- EU directives

(recognition of the environmental and socio-economic value of the Sava River Basin)

Natural basis for cooperation

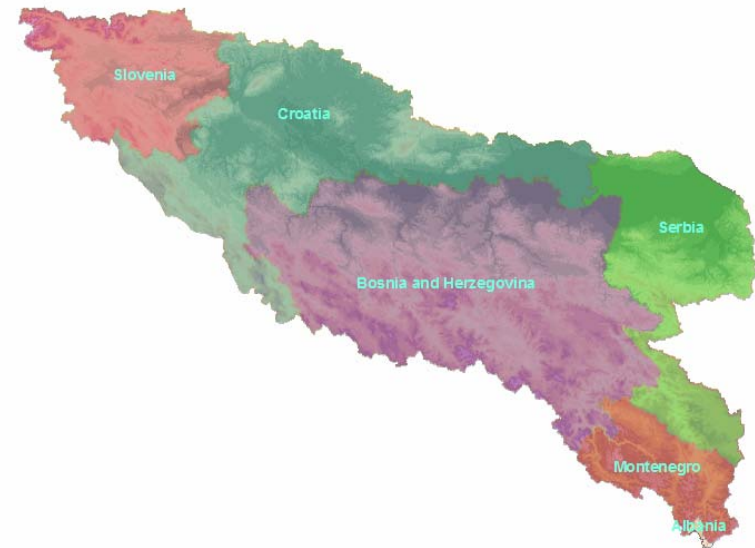
(high environmental and socio-economic value of the Sava river)

- Natural beauty
- Large retention capacity
- High biological and landscape diversity
- High potential for different forms of water use (navigation, hydropower, water supply, recreation and tourism)

Basic facts about the SRB

- **The Sava River Basin as a Danube sub-basin**
 - **Basin area:** 97 713 km² (the second largest, after the Tisza basin)
 - **Average flow** (at the mouth): 1722 m³/s (the largest tributary)
 - **River length:** 940 km (594 km of which are the waterway)

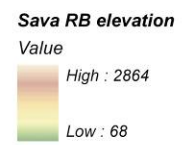
Country	Share of the basin (%)	Share of the territory (%)
Albania	0.2	0.6
Bosnia & Herzegovina	39.2	75.8
Croatia	26.0	45.2
Montenegro	7.1	49.6
Serbia	15.5	17.4
Slovenia	12.0	52.8



Sava River Basin overview map



- Sava RB boundary
 - State borders
 - Urban areas**
 - Continuous urban areas
 - Discontinuous urban areas
 - Industrial or commercial units
 - Green urban areas
 - Sport and leisure facilities
 - Urban centers
 - Reservoirs (V>=5 mil m3)
 - Sava RB rivers**
(Catchments >=1000 sq.km)*
 - Sava River
 - 1st order tributary
 - 2nd order tributary
 - 3rd order tributary
- *except Sutla/Sotla, Lašva and Tinja

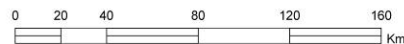


Processed and compiled by the Secretariat of the ISRBC
November 2009



The boundaries and names shown and the designations used on this map do not imply official endorsement or acceptance by the ISRBC

Data sources:
DEM data: The NASA Shuttle Radar Topographic Mission (SRTM) processed by the CIAT-CSI (<http://srtm.csi.cgiar.org>), USGS
CORINE land cover: EEA (<http://www.eea.europa.eu>)
Other data: ICPDR, ESRI, the Parties to the FASRB (SI,HR,BA,RS)



1:2,000,000

Coordinate system: ETRS 1989
Projection: Lambert Azimuthal Equal Area

High environmental and social value

- **Natural beauty**



High environmental and social value

- Large retention areas



High environmental and social value

- High biological and landscape diversity
(natural wetlands, parks, protected areas)



High environmental and social value

- High potential for transport of cargo and passengers



High environmental and social value

- High potential for tourism, leisure activities and recreation development



Framework Agreement on the SRB

- **The Sava River Initiative**

- **Launch of the Initiative:** June 2001
- **Signing the Letter of Intent on Coop. in the SRB:** Nov. 29, 2001
- **Signing the FASRB:** Kranjska Gora, Dec. 3, 2002
- **Est. of the Interim Sava Commission:** Brussels, March 12, 2003
- **Ratification of the FASRB:** December 29, 2004
- **Est. of the Sava Commission:** Zagreb, June 27-29, 2005
- **Est. of the ISRBC Secretariat:** Zagreb, January 9, 2006

Framework Agreement on the SRB

- **Key objective:**

**Transboundary cooperation
for sustainable development of the region**

- Issues of **sustainability**:

- Improvement of water quality
- Protection of aquatic ecosystem
- Protection against the harmful effects of water
(due to floods, ice, droughts, accidents)

- **Development** activities:

- Different kinds of water use
(navigation, hydropower, water supply, irrigation, recreation, tourism)

Framework Agreement on the SRB

- **Particular objectives:**
 - To establish an international regime of **navigation**
 - To establish a sustainable **water management**
 - To prevent / limit **hazards** (floods, droughts, ice, accidents) and eliminate / reduce the **consequences**
- FASRB implemented by the **Sava Commission**, with the **Secretariat** as its executive and administrative body
- **4 Parties:** BA, HR, RS, SI
ME (to approach)

Framework Agreement on the SRB

- **Peculiarities:**
 - **The first multilateral agreement** in the region signed after the Agreement on succession
 - Provides to the Sava Commission **the broadest scope of work** within the family of European basin organizations
 - Given the international **legal capacity**, for:
 - Making **decisions** in the field of Navigation
 - Providing **recommendations** on all other issues (i.e. Water Management)

Framework Agreement on the SRB

- **National authorities** responsible for implementation of FASRB

- **Bosnia and Herzegovina:**

- Ministry of communications and transport of BA

- Ministry of foreign trade and economic relations of BA

- Ministry of agriculture, forestry and water management of the Republika Srpska

- Federal Ministry of agriculture, forestry and water management

- Ministry of transport and communications of the Republika Srpska

- Federal Ministry of transport and communications

- Ministry of spatial planning, civil engineering and ecology of the Republika Srpska

- Federal Ministry of environment and tourism

- The Government of District Brčko

Framework Agreement on the SRB

- **National authorities responsible for implementation of FASRB**

- Croatia:

- Ministry of sea, transport and infrastructure

- Ministry of regional development, forestry and water management

- Serbia:

- Ministry of agriculture, forestry and water management

- Ministry of environment and spatial planning

- Ministry of infrastructure

- Ministry of foreign affairs

- Republic Hydrometeorological Institute of Serbia

- Republic Geodetic Institute

Framework Agreement on the SRB

- **National authorities** responsible for implementation of FASRB
 - **Slovenia:**
 - Ministry of foreign affairs
 - Ministry of environment and spatial planning
 - Ministry of economy
 - Ministry of transport
 - Government Office for local self-government and regional policy
 - Government Office for development and european affairs

International Sava River Basin Commission

- **Activities:**

- Development of joint / integrated **plans** for the SRB
 - River Basin Management Plan (according to EU WFD)
 - Flood Risk Management Plan (according to EU Flood Directive)
 - Contingency Plan
 - Sediment Management Plan
- Establishment of **integrated systems** for the SRB
 - GIS
 - RIS (River Information Services)
 - Flood Forecasting and Warning System
 - Accident Emergency Warning System (use of the ICDPR's system)
- Preparation and implementation of related **projects**

International Sava River Basin Commission

- **Activities:**
 - Preparation and implementation of **navigation-related projects**
 - Rehabilitation and development of navigation in the Sava River Basin
 - Restoration of the waterway marking system on the Sava River
 - Establishment of the system for collection of waste from vessels
 - Harmonization of **regulation** (national → EU)
 - Creation of additional **protocols to the FASRB**
 - Navigation regime
 - Prevention of water pollution caused by navigation
 - Flood protection
 - Emergency situations
 - Sediment management
 - Transboundary impacts
 - **Cooperation and public participation**

International Sava River Basin Commission

Field of implementation	Project title	Duration	Status
Water management	Develop. of Sava RBM Plan	2 years	Commenced on 1 Dec 2009
	Sediment balance for the Sava river	2 years	Application submitted to UNESCO/IHP
	DIKTAS*	4 years	Approved by UNDP GEF, to start soon
	Groundwater management in the SRB		Initially discussed with World Bank
	Water and Climate Adaptation Plan for the SRB*	1.5 years	Commenced in June 2009, entering a new phase
Navigation	Development of the Sava river waterway	~2 years	EIA for HR-BA section drafted; EIA for BA-RS section and Detailed design to be done
	Restoration of the waterway marking system	~2 years	Finalized
	Master Plan for development of nautical tourism in SRB	~1 year	ToR to be prepared
	Establishment of Sava RIS	8 months	Commenced on 15 Sep 2009

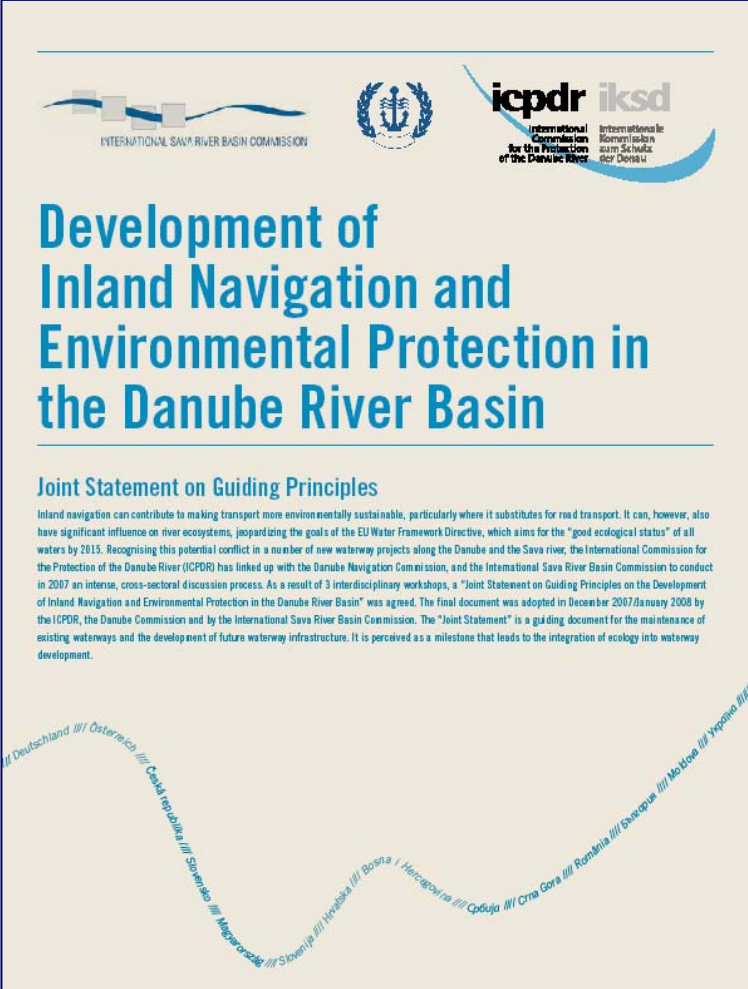
* External project

International Sava River Basin Commission

Filed of implementation	Project title	Duration	Status
Water management and flood protection	Hydrological Study for SRB	2.5 years	To be discussed with the Parties
Flood protection	Flood mapping study for the Sava river		Under implementation, in cooperation with USACE
	Support to development of Flood Risk Manag. Plan	2 years	Expression of interest accepted by UNECE, project proposal under development
	Flood forecasting and warning system for the SRB	~3 years	Funding being sought
Natural resources protection	BIOSED	2.5 years	Application submitted to SEE TCP
Accident prevention and control	WACOSS	2 years	Application submitted to SEE TCP
Information management	Establishment of Sava GIS	2 years	Core establishment to start in 2010
Public participation and cooperation	Stakeholder analysis and involvement plan for SRB	8 months	To be implemented in 2010 (with GWP-Med), request for support sent to UNESCO

International Sava River Basin Commission

- **Cooperation**
 - ICPDR, Danube Commission, UNECE, EU institutions, many others ...

INTERNATIONAL SAVA RIVER BASIN COMMISSION

icpdr iksd
International Commission for the Protection of the Danube River

Development of Inland Navigation and Environmental Protection in the Danube River Basin

Joint Statement on Guiding Principles

Inland navigation can contribute to making transport more environmentally sustainable, particularly where it substitutes for road transport. It can, however, also have significant influence on river ecosystems, jeopardizing the goals of the EU Water Framework Directive, which aims for the "good ecological status" of all waters by 2015. Recognising this potential conflict in a number of new waterway projects along the Danube and the Sava river, the International Commission for the Protection of the Danube River (ICPDR) has linked up with the Danube Navigation Commission, and the International Sava River Basin Commission to conduct in 2007 an intense, cross-sectoral discussion process. As a result of 3 interdisciplinary workshops, a "Joint Statement on Guiding Principles on the Development of Inland Navigation and Environmental Protection in the Danube River Basin" was agreed. The final document was adopted in December 2007/January 2008 by the ICPDR, the Danube Commission and by the International Sava River Basin Commission. The "Joint Statement" is a guiding document for the maintenance of existing waterways and the development of future waterway infrastructure. It is perceived as a milestone that leads to the integration of ecology into waterway development.

/// Deutschland /// Österreich /// Česká republika /// Slovensko /// Maďarsország /// Slovenija /// Hrvatska /// Bosna i Hercegovina /// Crna Gora /// România /// Bulgaria /// Moldova /// Ucraina ///

International Sava River Basin Commission

- **Cooperation**

- Other European basin organizations:

- Danube* (ICPDR, Danube Commission),

- Oder* (IKSO), *Elbe* (IKSE),

- Scheld* (ISC), *Meuse* (CIM),

- Rhein* (IKSR, Rhein Navigation Commission),

- Moselle* (IKSMS, Moselle Commission),

- Bodensee* (IGKB), *Lake Geneva* (CIPEL)



International Sava River Basin Commission

- **Sava Day**
 - **1st of June** proclaimed as the official Sava Day at the 1st MoP (Zagreb, 1 Jun 2007)

Rafting and kayaking, Sava Day 2008

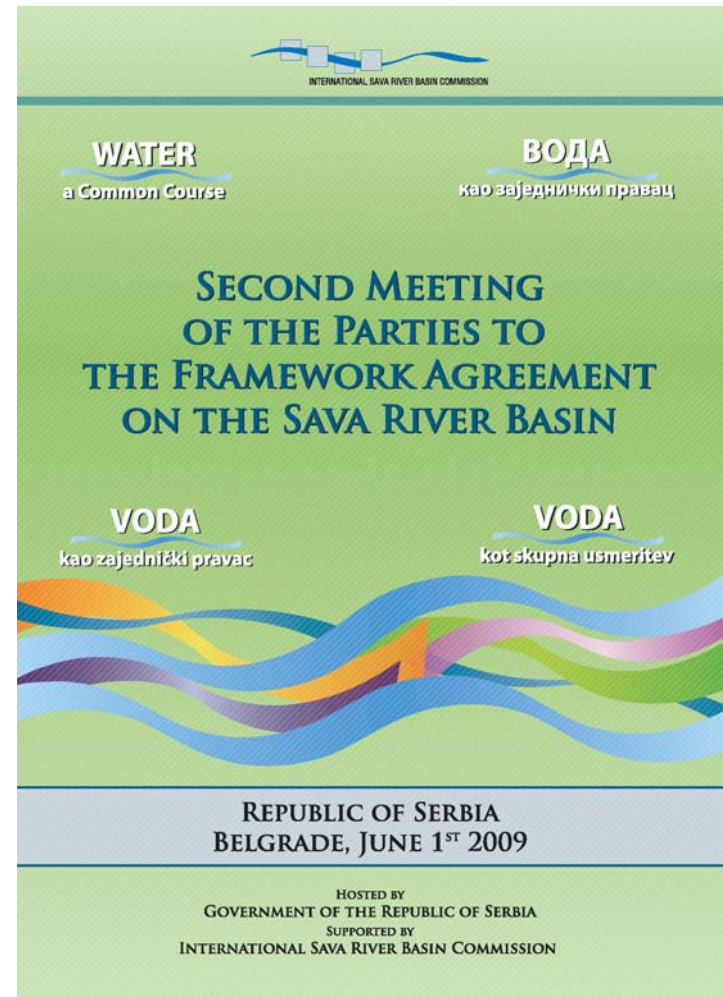
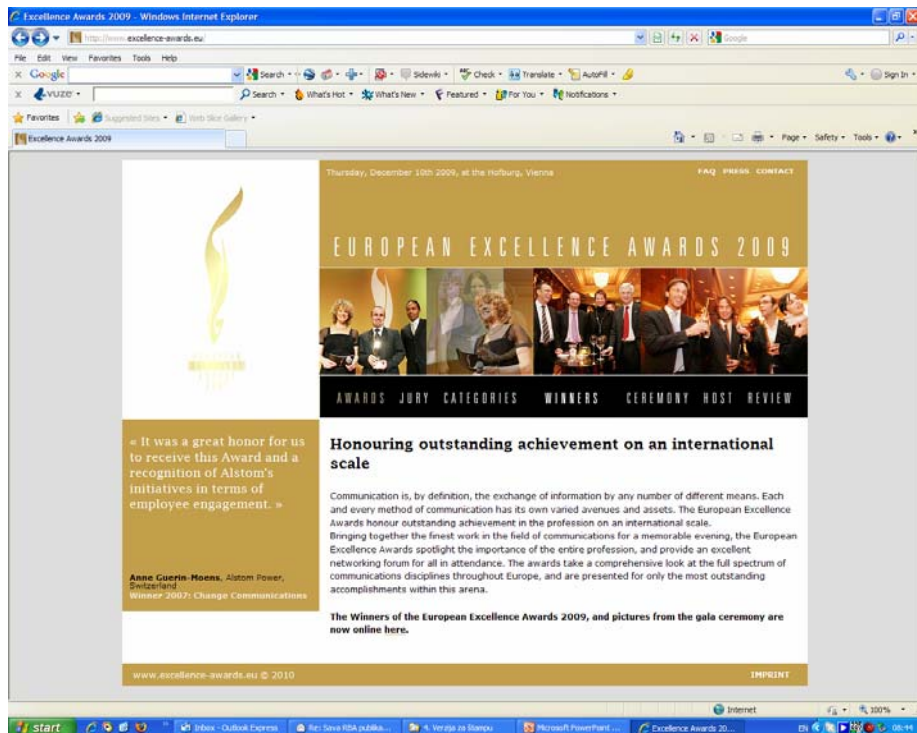


Boat tour Sisak - Belgrade, Sava Day 2008



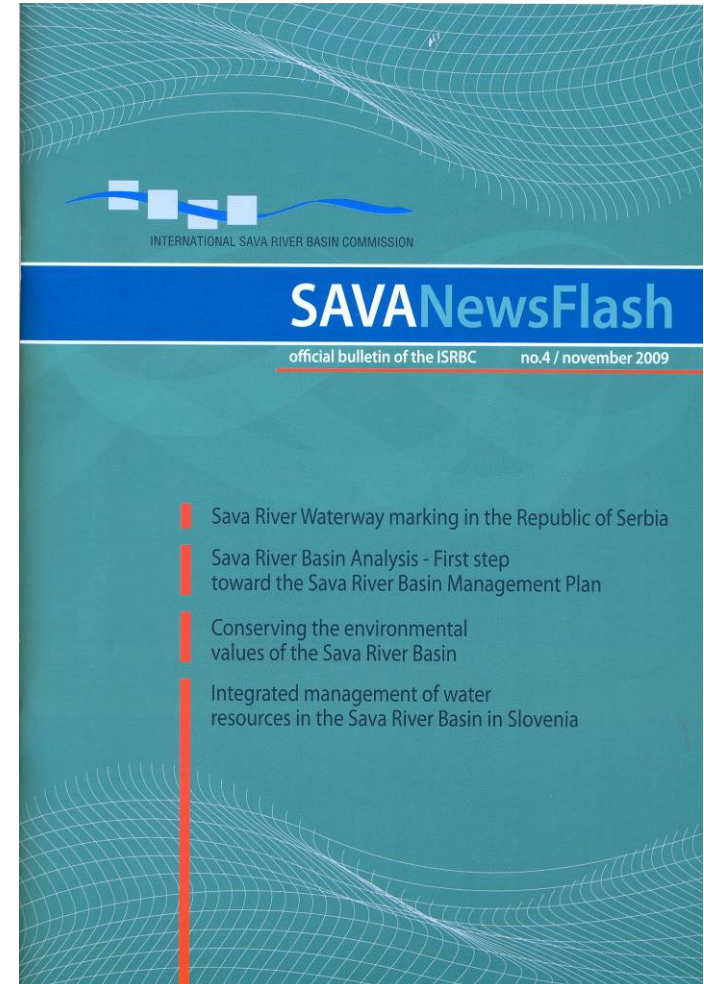
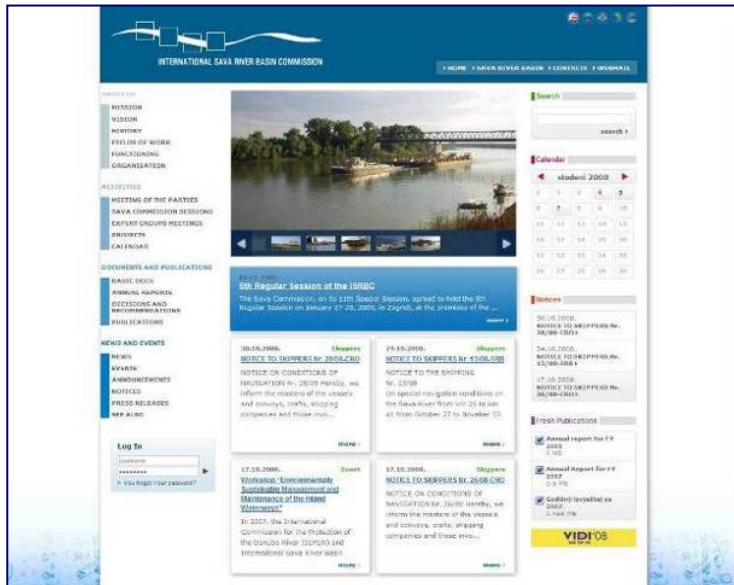
International Sava River Basin Commission

- **Sava Day 2009**
 - Promotion activities and events in all countries (support by “Coca-Cola”)



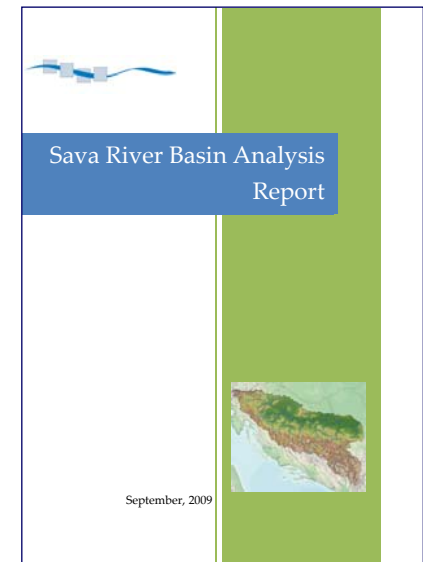
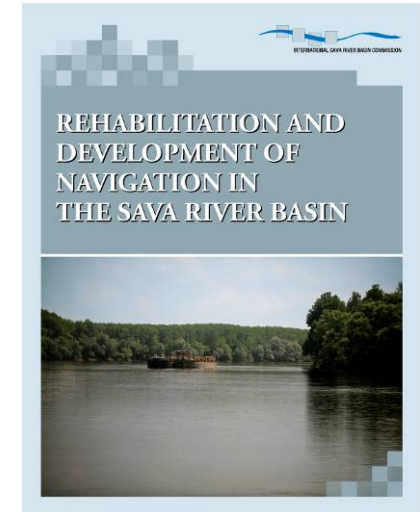
International Sava River Basin Commission

- **Promotion & dissemination of information**
 - ISRBC web-site
 - “Sava NewsFlash” bulletin



International Sava River Basin Commission

- **Promotion & dissemination of information (cont.)**
 - Brochures
 - **“Rehabilitation and development of navigation in the Sava River basin”** – published in Nov. 2009
 - **“Summary review of the Sava River Basin Analysis”** – to be published in 2010
 - Posters, leaflets, flyers, giveaways



International Sava River Basin Commission

- **Commitment of the Parties**

- **Framework Agreement on the Sava River Basin – FASRB (2002)**
- **Protocols** to the FASRB (under preparation)
- **Strategy** on Implementation of the FASRB (2008)
- **Declaration** from the 2nd Meeting of the Parties to the FASRB (2009)
- **Cooperation and coordination** with ICPDR and Danube Commission



Summary of the approach

- **Natural** basis
 - Natural beauty
 - Landscape and bio-diversity
 - Retention capacity
 - High development potential

- **Legal and instit.** basis
 - Cohesive
 - Integrated
 - Transparent
 - Aligned with EU directives
 - Subregional
 - Pragmatic and practical

- **Commitment** of the Parties

A guaranty for success
through projects



Contact information

International Sava River Basin Commission

Nova ves 11

10000 Zagreb

Croatia

www.savacommission.org