

ESPON



Nacionalni dogodek ESPON – ESPON INTERSTRAT
Ljubljana, 4.10.2011

Prioriteta 1:

**Privlačnost evropskih regij in mest za prebivalce
in obiskovalce (ATTREG)**

Attractiveness of European Regions and Cities for Residents and Visitors (ATTREG)

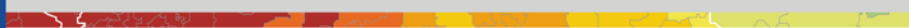
Trajanje projekta:

Februar 2010 – Oktober 2012



EUROPEAN UNION
Part-financed by the European Regional Development Fund
INVESTING IN YOUR FUTURE

ESPON



ATTREG

Vodilni partner:	University Rovira i Virgili (Španija): Antonio Russo
Projektni partnerji:	European Institute for Comparative Urban Research – EURICUR (Nizozemska) Ca' Foscari Venice University (Italija) Catholic University of Leuven (Belgija) University of Coimbra (Portugalska) Centre for Regional and Tourism Research – CRT (Danska) Polish Academy of Sciences - S. Leszczycki Institute of Geography and Spatial Organization – IGSO (Poljska) University of Ljubljana – Faculty of Civil and Geodetic Engineering (FGG) & Faculty of Maritime Studies and Transportation (FPP) (Slovenija) University of the West of England, Bristol (Združeno kraljestvo)
Raziskovalni podpartner:	Istanbul Technological University (Turčija)

EUROPEAN UNION
Part-financed by the European Regional Development Fund
INVESTING IN YOUR FUTURE

ATTREG: Namen projekta

- A. Raziskati **teritorialno privlačnost** (ang. territorial attractiveness) ter njeno **dinamiko v prostoru**.
- Oblikovanje koncepta primerjalne teritorialne privlačnosti, modeliranje teritorialne privlačnosti, razumevanje ter uporaba v regionalni politiki.
- B. Raziskati možnosti, kako lahko programa ESPON oz. EU pripomore k izgradnji **bolj konkurenčne in povezane Evrope**.
- Privlačnost regij in mest razumemo kot njihovo **spособnost privlačiti tokove ljudi** – prek njih pa znanje, spretnosti in kapital (kar neposredno vpliva na strukturo lokalne družbe ter zmogljivost lokalnega in regionalnega gospodarstva).

Privlačnost regije (mesta) zagotavlja neke vrste družbeno in gospodarsko stabilnost regije (mesta).

ATTREG: Rezultati – 1

ATTREG regional typology based on differentiating net migration and visitor flow-rates (2000-06)

Retention or just attraction?

Cluster 1 – regions with a general out-migration of the resident population and low rates of visitor arrivals.

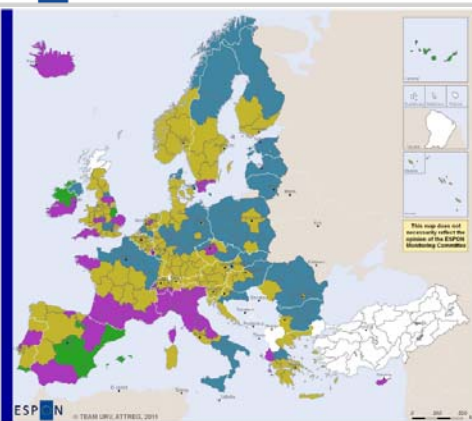
Cluster 2 – regions with low net in-migration rates and important numbers of visitors - generally more visitors in a year than residents on average.

Cluster 3 – regions with relatively high net rates of in-migration between 6 and 14 migrants per 1000 inhabitants annually and, on average, as many international visitors as residents.

Cluster 4 - 11 regions with the highest flow rates between 15 and 27 migrants per 1000 inhabitants and around three times the number of visitors as residents over the course of a year.

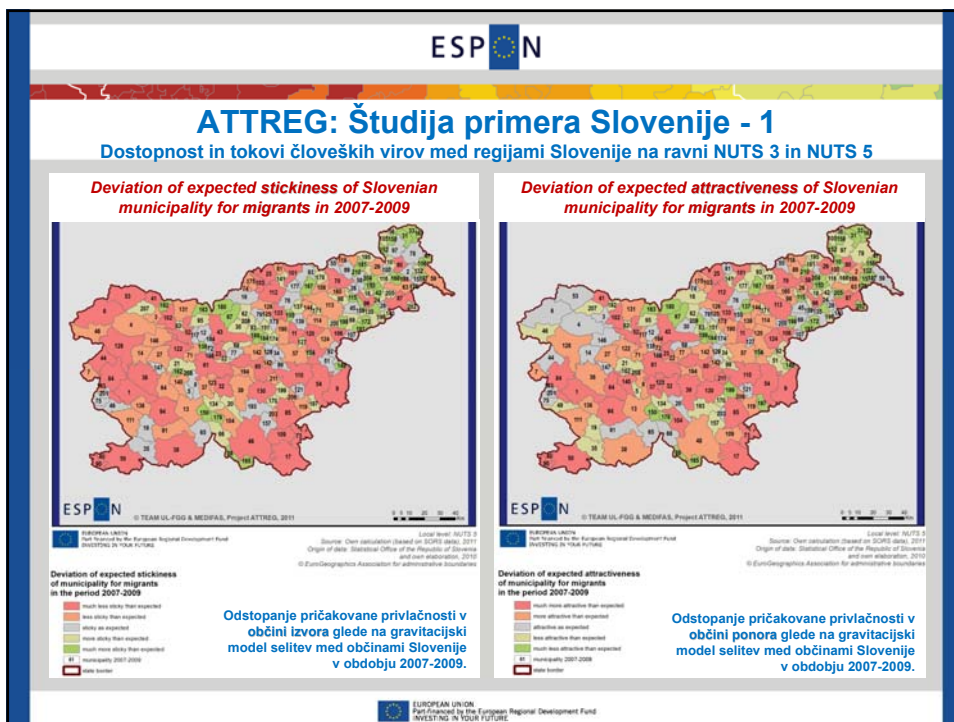
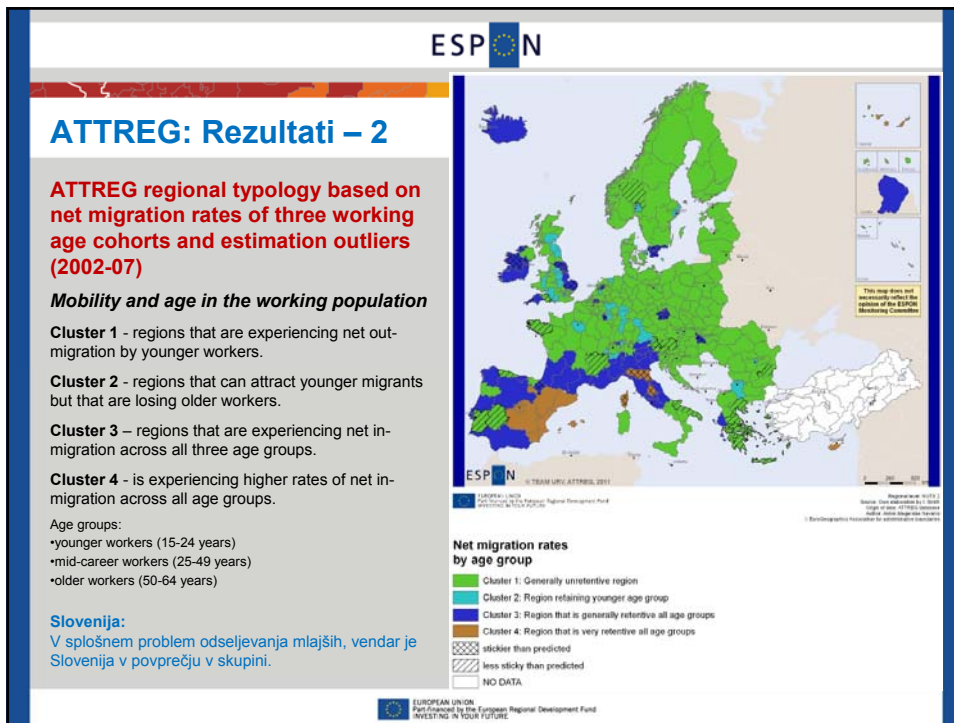
Slovenija:

V obeh NUTS 2 regijah se kaže nizek pozitiven saldo priseljenih na prebivalca ter povprečno število obiskovalcev na prebivalca.



Total population flow rates

- Cluster 1: Low retention rate, low visitor attractor
- Cluster 2: Middle retention rate, mid-level visitor attractor
- Cluster 3: High retention rate, mid-level visitor attractor
- Cluster 4: High retention rate, high level visitor attractor
- NO DATA



ATTREG: Študija primera Slovenije - 2

Dostopnost in tokovi človeških virov med regijami Slovenije na ravni NUTS 3 in NUTS 5

Deviation of expected stickiness of Slovenian municipality for labour commuters in 2007-2009



ESPON
© TEAM UL, FGG & MEDPAA, Project ATTREG, 2011
EUROPEAN UNION
Part financed by the European Regional Development Fund
INVESTING IN YOUR FUTURE
Source: Own calculation (based on EURO data), 2011
Origin of data: Statistical Office of the Republic of Slovenia
and own elaboration, 2010
© EuroGeographics Association for administrative boundaries

Deviation of expected stickiness of municipality for labour commuters in the period 2007-2009



Odstopanje pričakovane privlačnosti v občini izvora glede na gravitacijski model delavcev vozačev med občinami Slovenije v obdobju 2007-2009.

Deviation of expected attractiveness of Slovenian municipality for labour commuters in 2007-2009



ESPON
© TEAM UL, FGG & MEDPAA, Project ATTREG, 2011
EUROPEAN UNION
Part financed by the European Regional Development Fund
INVESTING IN YOUR FUTURE
Source: Own calculation (based on EURO data), 2011
Origin of data: Statistical Office of the Republic of Slovenia
and own elaboration, 2010
© EuroGeographics Association for administrative boundaries

Deviation of expected attractiveness of municipality for labour commuters in the period 2007-2009



Odstopanje pričakovane privlačnosti v občini ponora glede na gravitacijski model delavcev vozačev med občinami Slovenije v obdobju 2007-2009.

ATTREG: Pomembnost za deležnike v Sloveniji

- **Deležniki:** nacionalni ter regionalni predstavniki oblasti (ministrstva in RRA).
- **Sodelovanje** med raziskovalci in deležniki: pripombe na rezultate projekta ESPON ATTREG *Inception Report* ter *Interim Report*, anketa.
- Oblikovanje **koncepta primerjalne teritorialne privlačnosti** ter uporaba v regionalni politiki.
- Možnost izboljšanja teritorialne privlačnosti posameznih regij v Sloveniji s podporo (obstoječe ali nove) **razvojnne politike**.

ATTREG - Attractiveness of European Regions and Cities for Residents and Visitors

Spletne strani projekta ESPON ATTREG:

<http://www.attregproject.net/>

http://www.espon.eu/main/Menu_Projects/Menu_AppliedResearch/attreg.html

Več informacij v Sloveniji:

marija.bogataj@guest.arnes.si

samo.drobne@fgg.uni-lj.si